

B-52 FLIGHT MISHAP HISTORY
(All Rates per 100,000 Flying Hours)

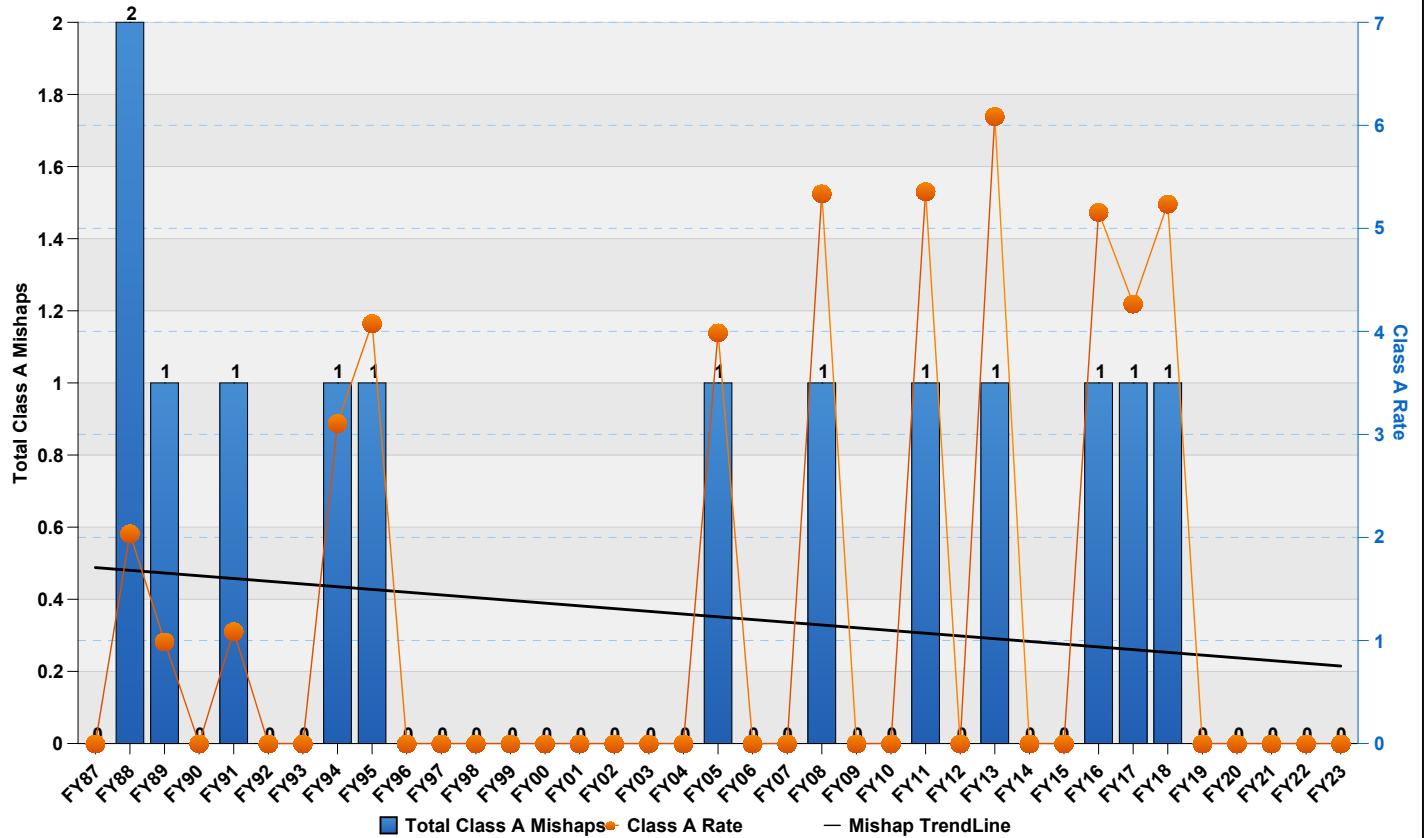
YEAR	CLASS A		CLASS B		DESTROYED		FATAL		HOURS	CUM HRS
	Total Class A Mishaps	Class A Rate	Total Class B Mishaps	Class B Rate	Total Destroyed	Destroyed Rate	PILOT	ALL		
CY55	0	0.00	0	0.00	0	0.00	0	0	4,979	4,979
CY56	4	26.92	0	0.00	3	20.19	5	19	14,860	19,839
CY57	6	10.17	0	0.00	3	5.09	7	16	58,971	78,810
CY58	8	6.50	0	0.00	6	4.88	12	41	123,030	201,840
CY59	5	2.19	1	0.44	3	1.32	1	4	227,973	429,813
CY60	4	1.50	2	0.75	4	1.50	3	8	267,331	697,144
CY61	6	1.77	0	0.00	6	1.77	5	25	338,662	1,035,806
CY62	1	0.25	8	1.98	0	0.00	0	0	403,043	1,438,849
CY63	4	0.98	7	1.71	3	0.73	5	18	408,239	1,847,088
CY64	5	1.22	8	1.95	3	0.73	2	10	409,382	2,256,470
CY65	1	0.25	6	1.51	2	0.50	3	8	397,405	2,653,875
CY66	3	0.74	3	0.74	2	0.50	3	12	403,037	3,056,912
CY67	6	1.66	4	1.11	5	1.38	6	21	361,754	3,418,666
CY68	6	1.54	4	1.03	6	1.54	6	15	389,843	3,808,509
CY69	9	2.97	4	1.32	8	2.64	13	33	302,949	4,111,458
CY70	1	0.43	5	2.17	1	0.43	0	0	230,746	4,342,204
CY71	1	0.47	2	0.94	1	0.47	2	9	212,003	4,554,207
CY72	5	1.44	8	2.31	4	1.16	4	14	346,021	4,900,228
CY73	2	0.93	4	1.85	1	0.46	0	0	216,165	5,116,393
CY74	3	1.88	7	4.39	3	1.88	4	12	159,563	5,275,956
CY75	1	0.71	5	3.54	1	0.71	1	3	141,204	5,417,160
CY76	0	0.00	5	3.64	0	0.00	0	0	137,469	5,554,629
CY77	1	0.74	32	23.75	1	0.74	3	8	134,722	5,689,351
CY78	1	0.75	33	24.80	1	0.75	2	5	133,038	5,822,389
CY79	1	0.75	3	2.25	0	0.00	0	0	133,234	5,955,623
CY80	1	0.77	1	0.77	0	0.00	0	0	130,405	6,086,028
CY81	1	0.75	7	5.24	1	0.75	2	8	133,677	6,219,705
CY82	2	1.64	0	0.00	2	1.64	3	9	122,121	6,341,826
CY83	1	0.95	0	0.00	1	0.95	3	7	104,866	6,446,692
CY84	2	1.92	1	0.96	1	0.96	1	2	103,933	6,550,625
CY85	0	0.00	0	0.00	0	0.00	0	0	105,566	6,656,191
CY86	0	0.00	0	0.00	0	0.00	0	0	102,381	6,758,572
FY87	0	0.00	1	1.25	0	0.00	0	0	80,014	6,838,586
FY88	2	2.04	0	0.00	1	1.02	0	1	98,004	6,936,590
FY89	1	0.99	0	0.00	1	0.99	0	0	100,516	7,037,106
FY90	0	0.00	0	0.00	0	0.00	0	0	91,037	7,128,143
FY91	1	1.09	0	0.00	1	1.09	0	3	91,454	7,219,597
FY92	0	0.00	0	0.00	0	0.00	0	0	69,056	7,288,653
FY93	0	0.00	1	1.88	0	0.00	0	0	53,295	7,341,948
FY94	1	3.11	1	3.11	1	3.11	3	4	32,144	7,374,092
FY95	1	4.08	1	4.08	0	0.00	0	0	24,528	7,398,620
FY96	0	0.00	0	0.00	0	0.00	0	0	25,502	7,424,122
FY97	0	0.00	0	0.00	0	0.00	0	0	23,297	7,447,419
FY98	0	0.00	1	4.38	0	0.00	0	0	22,852	7,470,271
FY99	0	0.00	2	9.24	0	0.00	0	0	21,643	7,491,914
FY00	0	0.00	6	27.84	0	0.00	0	0	21,554	7,513,468
FY01	0	0.00	5	22.75	0	0.00	0	0	21,975	7,535,443
FY02	0	0.00	0	0.00	0	0.00	0	0	33,754	7,569,197

FY03	0	0.00	1	3.67	0	0.00	0	1	27,224	7,596,421
FY04	0	0.00	4	17.70	0	0.00	0	0	22,596	7,619,017
FY05	1	3.99	3	11.96	0	0.00	0	0	25,082	7,644,099
FY06	0	0.00	1	3.95	0	0.00	0	0	25,315	7,669,414
FY07	0	0.00	4	19.92	0	0.00	0	0	20,083	7,689,497
FY08	1	5.34	2	10.67	1	5.34	2	6	18,739	7,708,236
FY09	0	0.00	3	19.07	0	0.00	0	0	15,730	7,723,966
FY10	0	0.00	0	0.00	0	0.00	0	0	15,220	7,739,186
FY11	1	5.36	1	5.36	0	0.00	0	0	18,670	7,757,856
FY12	0	0.00	0	0.00	0	0.00	0	0	18,830	7,776,686
FY13	1	6.09	2	12.17	0	0.00	0	0	16,431	7,793,117
FY14	0	0.00	0	0.00	0	0.00	0	0	18,187	7,811,304
FY15	0	0.00	0	0.00	0	0.00	0	0	18,651	7,829,955
FY16	1	5.16	1	5.16	1	5.16	0	0	19,379	7,849,334
FY17	1	4.27	2	8.53	0	0.00	0	0	23,434	7,872,768
FY18	1	5.24	0	0.00	0	0.00	0	0	19,075	7,891,843
FY19	0	0.00	2	13.01	0	0.00	0	0	15,369	7,907,212
FY20	0	0.00	3	20.96	0	0.00	0	0	14,310	7,921,522
FY21	0	0.00	0	0.00	0	0.00	0	0	16,503	7,938,025
FY22	0	0.00	1	7.27	0	0.00	0	0	13,761	7,951,786
FY23	0	0.00	1	7.02	0	0.00	0	0	14,238	7,966,024
Total	104.00		209.00		78.00		101.00	322.00		7,966,024
	Average Annual Class A Mishaps	Average Class A Rate	Average Annual Class B Mishaps	Average Class B Rate	Average Annual Destroyed	Average Destroyed Rate	Average Pilot Fatal Rate	Average Fatal Rate	Average Annual Hours	
5 YR	0.00	0.00	1.40	9.65	0.00	0.00	0.00	0.00	14,836	
10 YR	0.30	1.47	1.00	6.20	0.10	0.58	0.00	0.00	17,291	
LIFETIME	1.51	1.73	3.03	4.78	1.13	0.98	1.27	4.04	115,450	

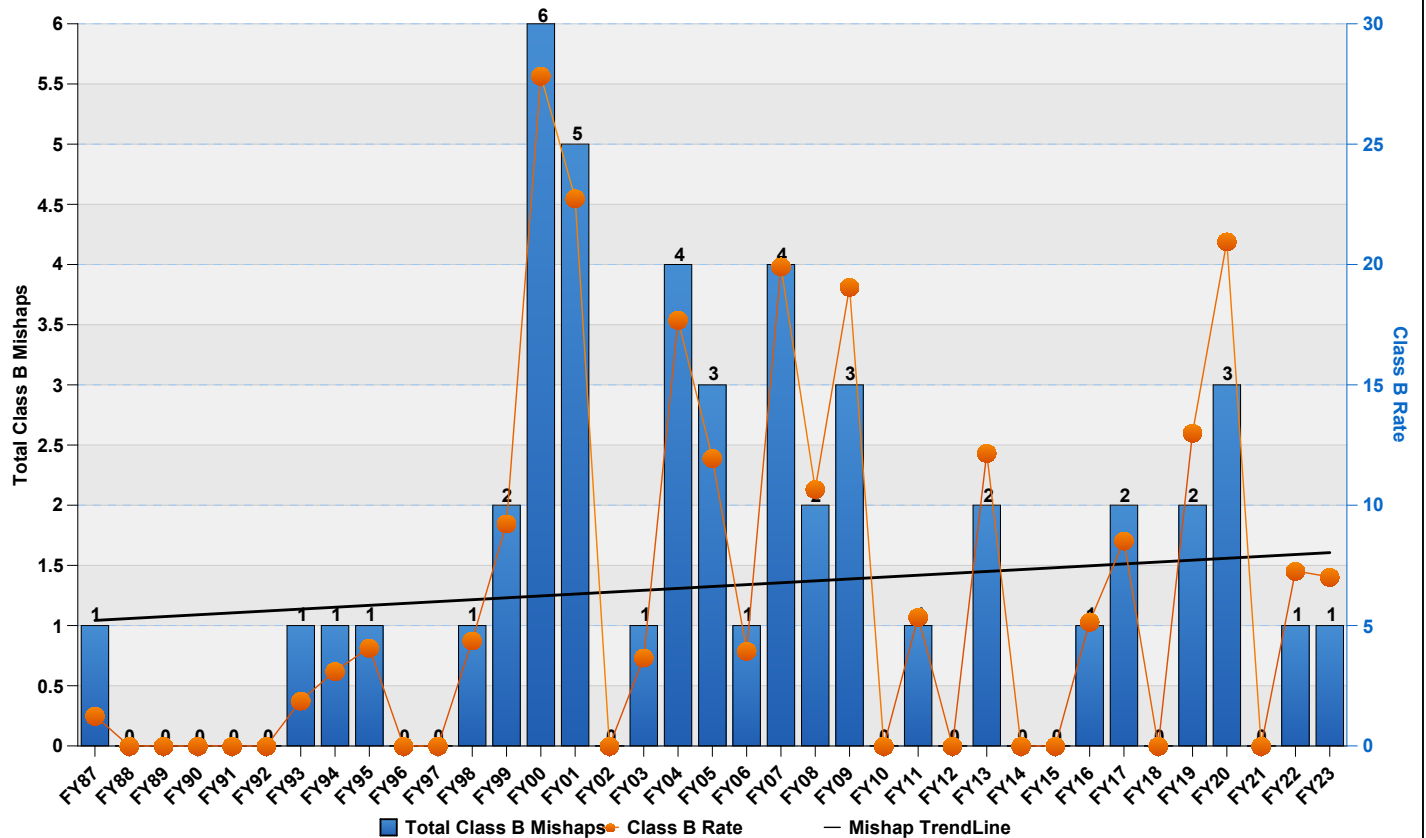
Flight "rates" are number of mishaps per 100,000 flight hours. Only Aviation "Flight" mishaps are reported here. An Aviation "Flight" mishap is any mishap in which there is intent for flight and reportable damage to a DoD aircraft. Explosives and chemical agents or guided missile mishaps that cause damage in excess of \$20,000 to a DoD aircraft with intent for flight are categorized as aircraft flight mishaps to avoid dual reporting. This is the only aviation mishap subcategory that contributes to the flight mishap rate (NOT flight-related or Aviation Ground Ops). Fiscal Years that have zero flying hours have been excluded.	Class A - event that results in fatality, permanent total disability, damage greater than or equal to \$2.5 million and/or a destroyed aircraft (excluding UAS/UAVs Groups 1, 2, or 3). Class B - event that results in permanent partial disability, hospitalization for inpatient care, and/or damage greater than \$600,000 but less than \$2.5 million.	Destroyed Aircraft: Only aircraft owned, designated or leased as "USAF" are included. Fatalities: Pilot totals only include "USAF" personnel designated as "pilot" by the Safety Investigation Board. "All" fatalities include all aviation-related fatalities regardless of designation (USAF, foreign, civilian, etc) or role (pilot, operator, passenger, etc). Additionally, all aviation-related fatalities count toward fatality rate regardless if they resulted from a "flight" (rate-producing) mishap or not.
---	---	---

UPDATED 09-Jul-24

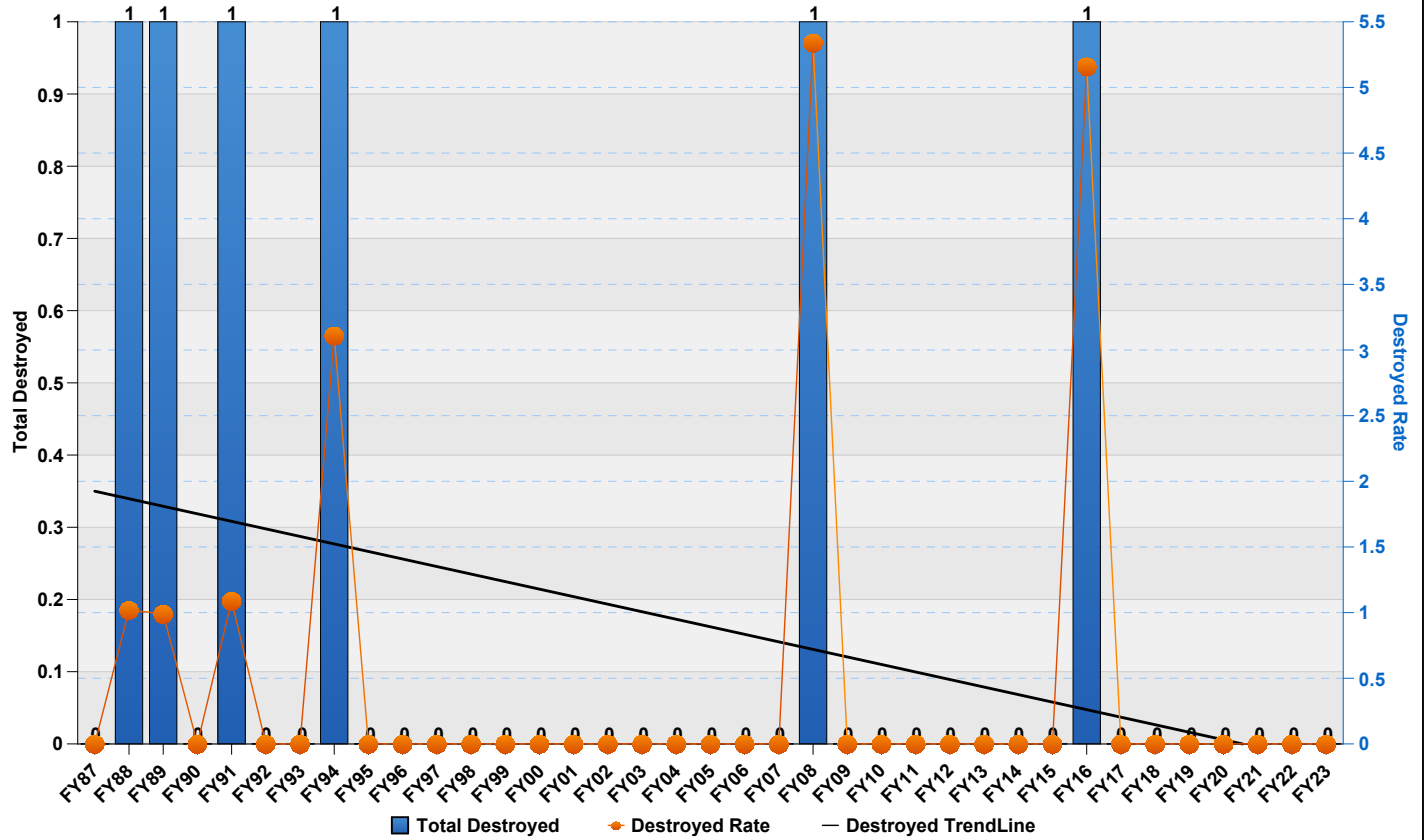
B-52 Class A Mishaps by Fiscal Year



B-52 Class B Mishaps by Fiscal Year



B-52 Destroyed Aircraft by Fiscal Year



B-52 Fatalities (All) by Fiscal Year

