

C-130 FLIGHT MISHAP HISTORY
(All Rates per 100,000 Flying Hours)

YEAR	CLASS A		CLASS B		DESTROYED		FATAL		HOURS	CUM HRS
	Total Class A Mishaps	Class A Rate	Total Class B Mishaps	Class B Rate	Total Destroyed	Destroyed Rate	PILOT	ALL		
CY55	1	2,173.91	0	0.00	0	0.00	0	0	46	46
CY56	1	186.22	0	0.00	0	0.00	0	0	537	583
CY57	0	0.00	0	0.00	0	0.00	0	0	22,633	23,216
CY58	4	5.04	1	1.26	1	1.26	2	6	79,290	102,506
CY59	4	3.98	1	1.00	1	1.00	1	10	100,457	202,963
CY60	1	0.82	0	0.00	0	0.00	0	0	121,844	324,807
CY61	4	2.79	0	0.00	1	0.70	0	0	143,363	468,170
CY62	6	3.42	6	3.42	3	1.71	8	33	175,479	643,649
CY63	2	0.79	3	1.18	1	0.39	0	0	254,331	897,980
CY64	4	0.94	3	0.71	1	0.24	0	1	424,034	1,322,014
CY65	9	1.62	6	1.08	5	0.90	9	25	554,079	1,876,093
CY66	16	2.20	11	1.51	6	0.83	8	23	727,191	2,603,284
CY67	13	1.98	12	1.83	9	1.37	5	78	656,986	3,260,270
CY68	11	1.85	6	1.01	6	1.01	0	8	593,976	3,854,246
CY69	8	1.49	7	1.30	4	0.74	9	35	537,126	4,391,372
CY70	3	0.60	4	0.79	3	0.60	8	60	504,113	4,895,485
CY71	2	0.41	5	1.03	1	0.21	3	10	487,137	5,382,622
CY72	7	1.46	4	0.83	5	1.04	12	29	480,989	5,863,611
CY73	1	0.25	4	1.00	1	0.25	3	7	399,605	6,263,216
CY74	5	1.39	3	0.83	3	0.83	4	12	360,549	6,623,765
CY75	3	0.82	1	0.27	2	0.55	3	8	365,181	6,988,946
CY76	0	0.00	1	0.30	0	0.00	0	0	336,592	7,325,538
CY77	1	0.30	12	3.59	0	0.00	0	1	334,524	7,660,062
CY78	7	2.01	37	10.63	5	1.44	11	29	348,168	8,008,230
CY79	0	0.00	1	0.28	0	0.00	0	0	360,806	8,369,036
CY80	2	0.56	0	0.00	2	0.56	4	22	354,589	8,723,625
CY81	4	1.09	2	0.54	3	0.81	4	39	368,433	9,092,058
CY82	2	0.53	1	0.27	2	0.53	8	34	376,261	9,468,319
CY83	1	0.27	1	0.27	1	0.27	2	6	376,939	9,845,258
CY84	3	0.80	1	0.27	1	0.27	3	18	374,577	10,219,835
CY85	3	0.79	2	0.52	3	0.79	5	27	381,929	10,601,764
CY86	2	0.54	0	0.00	2	0.54	3	14	367,186	10,968,950
FY87	1	0.36	3	1.09	1	0.36	1	5	274,706	11,243,656
FY88	2	0.58	0	0.00	1	0.29	2	6	344,160	11,587,816
FY89	1	0.29	0	0.00	1	0.29	0	1	339,149	11,926,965
FY90	0	0.00	0	0.00	0	0.00	0	0	325,201	12,252,166
FY91	0	0.00	0	0.00	0	0.00	0	0	401,615	12,653,781
FY92	2	0.63	0	0.00	2	0.63	8	24	315,952	12,969,733
FY93	1	0.33	0	0.00	1	0.33	2	6	300,134	13,269,867
FY94	1	0.36	1	0.36	1	0.36	0	8	279,909	13,549,776
FY95	1	0.35	1	0.35	1	0.35	2	6	282,848	13,832,624
FY96	1	0.34	1	0.34	1	0.34	2	9	294,059	14,126,683
FY97	2	0.70	1	0.35	2	0.70	2	13	283,997	14,410,680
FY98	0	0.00	1	0.35	0	0.00	0	0	282,876	14,693,556
FY99	0	0.00	3	1.06	0	0.00	0	0	283,542	14,977,098
FY00	1	0.37	12	4.42	0	0.00	0	3	271,717	15,248,815
FY01	2	0.73	13	4.76	0	0.00	0	0	272,957	15,521,772
FY02	3	0.94	10	3.12	3	0.94	2	13	320,327	15,842,099

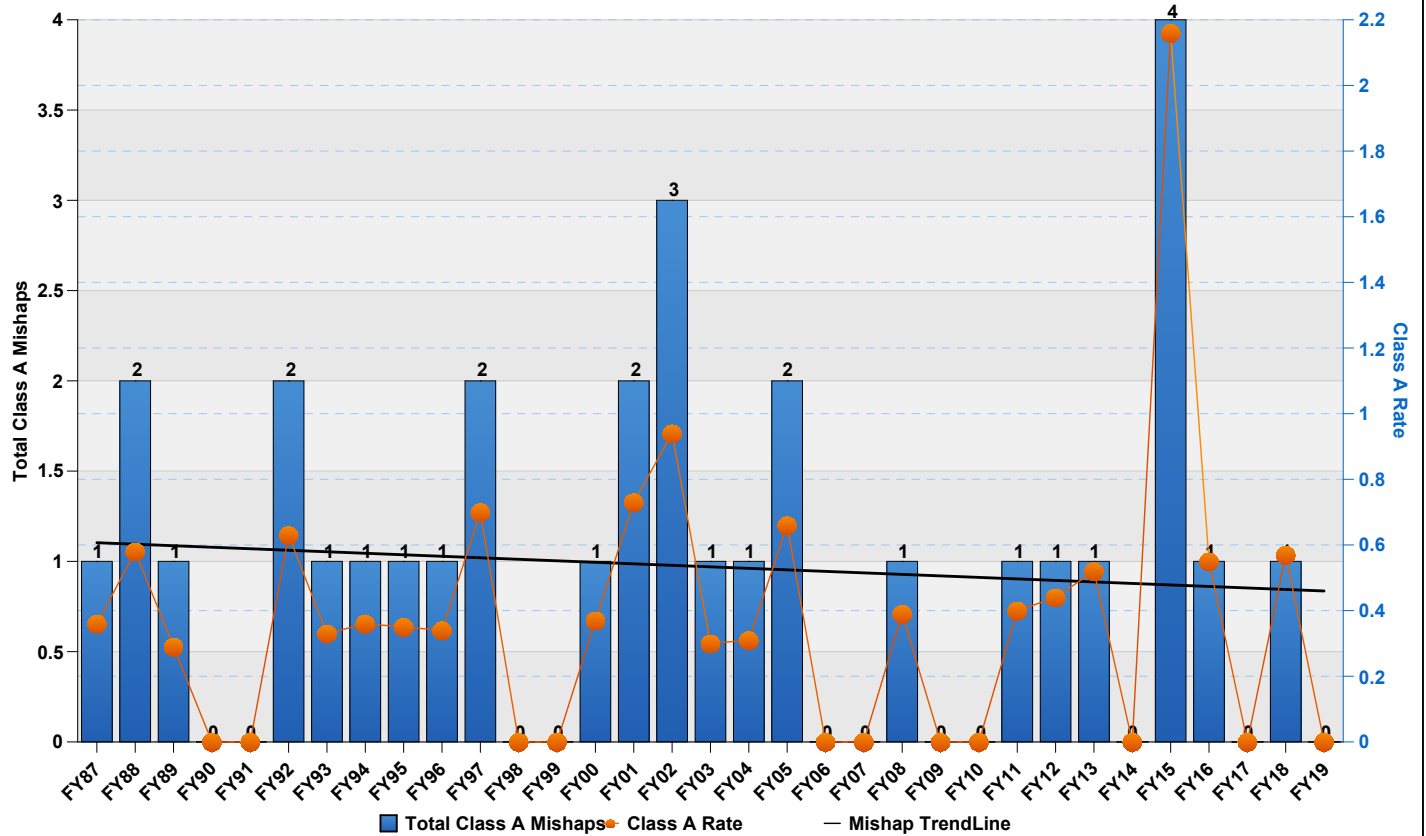
FY03	1	0.30	9	2.70	0	0.00	2	6	333,250	16,175,349
FY04	1	0.31	7	2.18	0	0.00	0	0	320,485	16,495,834
FY05	2	0.66	11	3.63	2	0.66	2	9	303,138	16,798,972
FY06	0	0.00	10	3.56	0	0.00	0	0	280,668	17,079,640
FY07	0	0.00	15	5.59	0	0.00	0	0	268,546	17,348,186
FY08	1	0.39	16	6.24	0	0.00	0	0	256,607	17,604,793
FY09	0	0.00	17	6.98	0	0.00	0	1	243,421	17,848,214
FY10	0	0.00	3	1.19	0	0.00	0	0	252,046	18,100,260
FY11	1	0.40	4	1.60	0	0.00	0	0	249,692	18,349,952
FY12	1	0.44	4	1.76	1	0.44	2	4	226,844	18,576,796
FY13	1	0.52	0	0.00	1	0.52	0	0	193,885	18,770,681
FY14	0	0.00	3	1.64	0	0.00	0	0	182,980	18,953,661
FY15	4	2.16	3	1.62	0	0.00	0	0	185,258	19,138,919
FY16	1	0.55	3	1.64	1	0.55	2	15	183,387	19,322,306
FY17	0	0.00	2	1.11	0	0.00	0	0	180,436	19,502,742
FY18	1	0.57	1	0.57	1	0.57	2	9	176,883	19,679,625
FY19	0	0.00	1	0.58	0	0.00	0	0	172,944	19,852,569
Total	162.00		290.00		92.00		146.00	673.00		19,852,569

	Average Annual Class A Mishaps	Average Class A Rate	Average Annual Class B Mishaps	Average Class B Rate	Average Annual Destroyed	Average Destroyed Rate	Average Pilot Fatal Rate	Average Fatal Rate	Average Annual Hours	
5 YR	1.20	0.67	2.00	1.11	0.40	0.22	0.44	2.67	179,782	
10 YR	0.90	0.45	2.40	1.20	0.40	0.20	0.30	1.40	200,436	
LIFETIME	2.49	0.82	4.46	1.46	1.42	0.46	0.74	3.39	305,424	

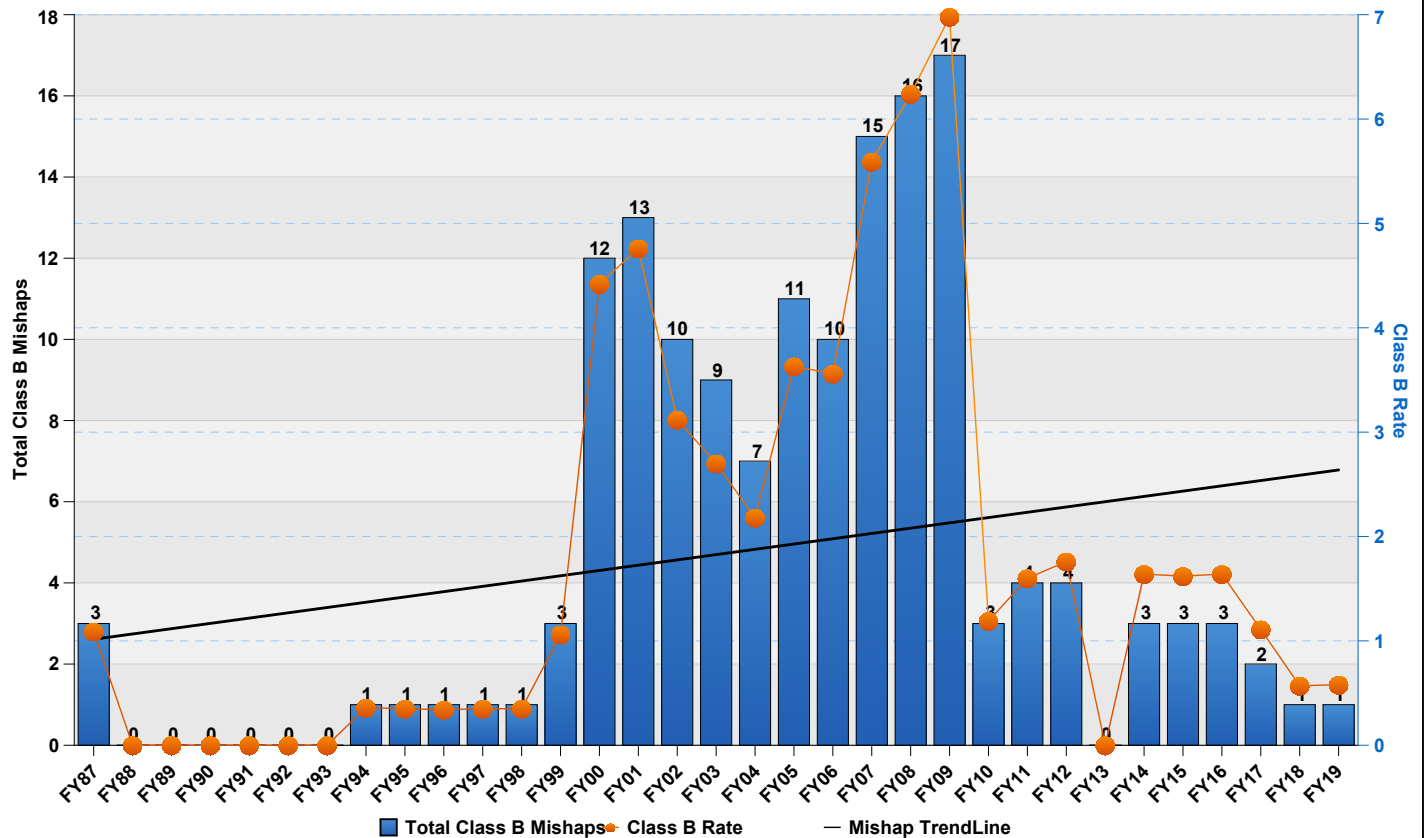
Flight "rates" are number of mishaps per 100,000 flight hours. Only Aviation "Flight" mishaps are reported here. An Aviation "Flight" mishap is any mishap in which there is intent for flight and reportable damage to a DoD aircraft. Explosives and chemical agents or guided missile mishaps that cause damage in excess of \$20,000 to a DoD aircraft with intent for flight are categorized as aircraft flight mishaps to avoid dual reporting. This is the only aviation mishap subcategory that contributes to the flight mishap rate (NOT flight-related or Aviation Ground Ops). Fiscal Years that have zero flying hours have been excluded.	Class A Mishap. A mishap resulting in one or more of the following: 1. Direct mishap cost totaling \$2,000,000 or more (\$1,000,000 for mishaps occurring before FY10). 2. A fatality or permanent total disability. 3. Destruction of a DoD aircraft. NOTE: A destroyed UAV/RPA is not a Class A mishap unless the preceding criteria in "1" or "2" are met. Class B Mishap. A mishap resulting in one or more of the following: 1. Direct mishap cost totaling \$500,000 or more but less than \$2,000,000 (\$200,000 to \$1,000,000 prior to FY10). 2. A permanent partial disability. 3. Inpatient hospitalization of three or more personnel. Does not count or include individuals hospitalized for observation, diagnostic, or administrative purposes that were treated and released.	Destroyed Aircraft: Only aircraft owned, designated or leased as "USAF" are included. Fatalities: Pilot totals only include "USAF" personnel designated as "pilot" by the Safety Investigation Board. "All" fatalities include all aviation-related fatalities regardless of designation (USAF, foreign, civilian, etc) or role (pilot, operator, passenger, etc). Additionally, all aviation-related fatalities count toward fatality rate regardless if they resulted from a "flight" (rate-producing) mishap or not.
---	---	---

UPDATED 31-Oct-19

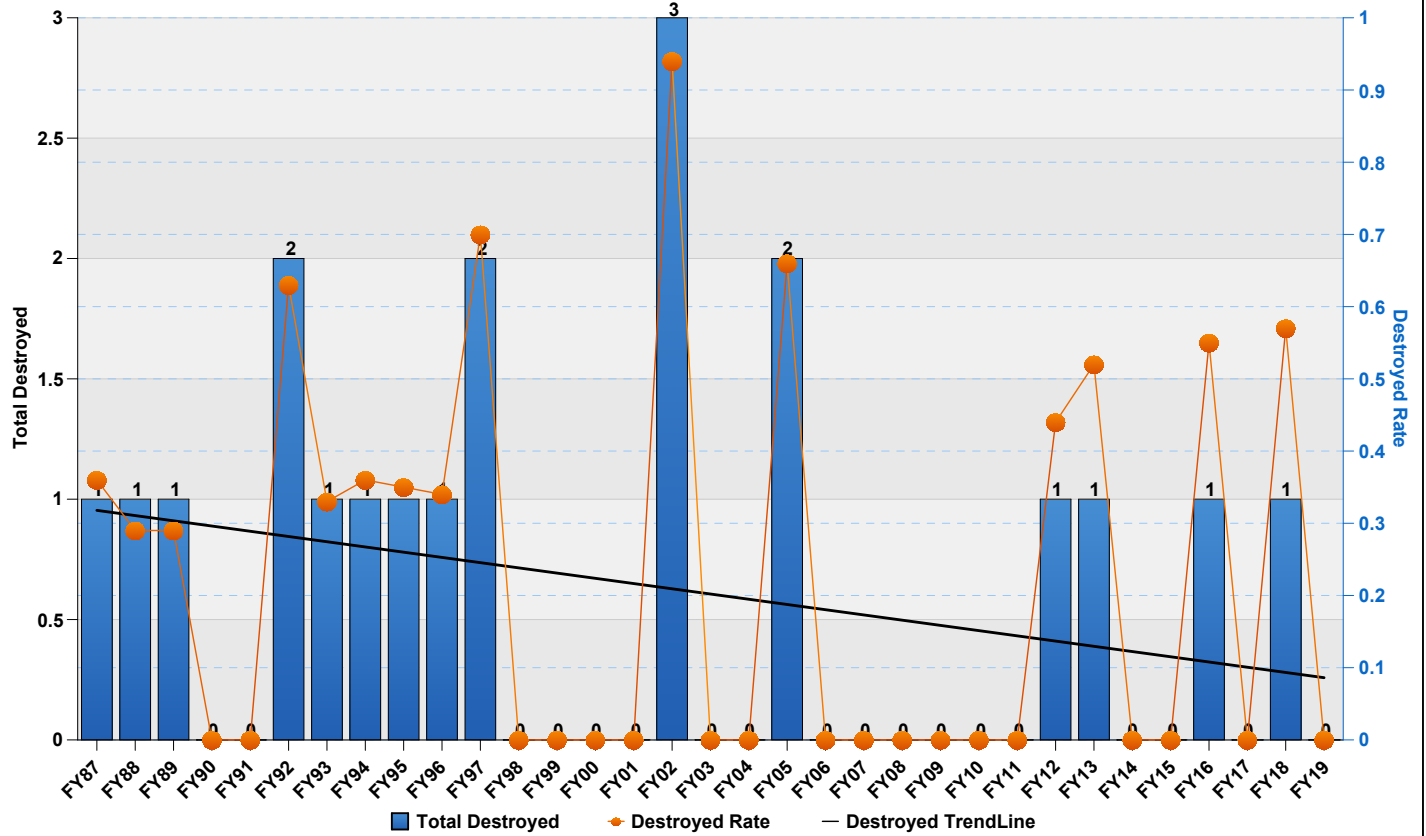
C-130 Class A Mishaps by Fiscal Year



C-130 Class B Mishaps by Fiscal Year



C-130 Destroyed Aircraft by Fiscal Year



C-130 Fatalities (All) by Fiscal Year

