

C-135 FLIGHT MISHAP HISTORY
(All Rates per 100,000 Flying Hours)

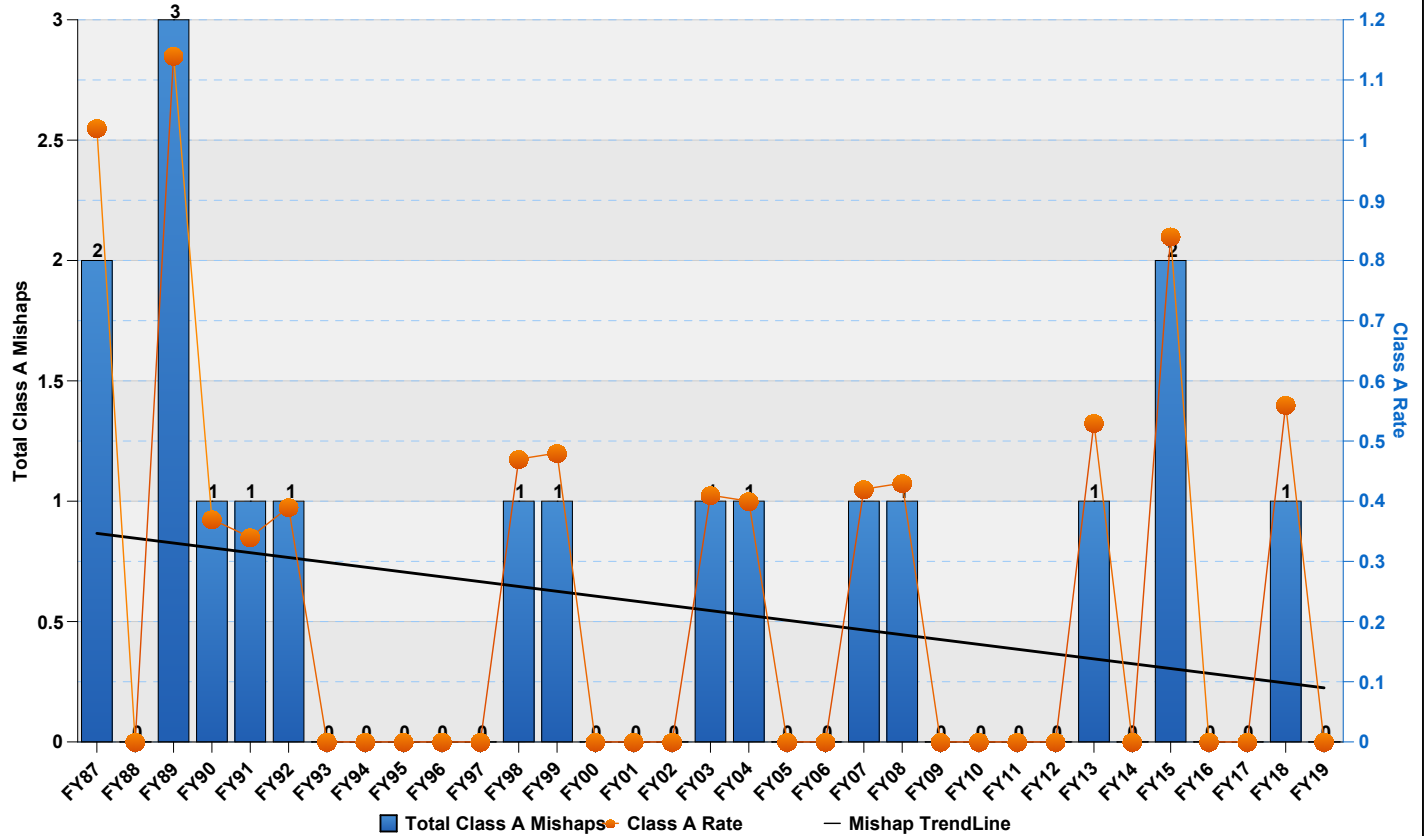
YEAR	CLASS A		CLASS B		DESTROYED		FATAL		HOURS	CUM HRS
	Total Class A Mishaps	Class A Rate	Total Class B Mishaps	Class B Rate	Total Destroyed	Destroyed Rate	PILOT	ALL		
CY57	0	0.00	0	0.00	0	0.00	0	0	4,497	4,497
CY58	3	6.94	2	4.63	2	4.63	7	20	43,204	47,701
CY59	3	2.53	1	0.84	2	1.69	4	8	118,426	166,127
CY60	3	1.94	2	1.29	5	3.23	3	9	154,579	320,706
CY61	2	0.99	0	0.00	0	0.00	0	0	201,263	521,969
CY62	5	1.78	5	1.78	5	1.78	13	60	280,695	802,664
CY63	3	0.89	0	0.00	4	1.19	7	21	336,771	1,139,435
CY64	1	0.26	2	0.52	2	0.52	2	83	385,681	1,525,116
CY65	4	1.00	0	0.00	5	1.25	11	126	400,572	1,925,688
CY66	2	0.44	1	0.22	3	0.67	6	21	449,445	2,375,133
CY67	2	0.48	3	0.71	2	0.48	4	10	419,651	2,794,784
CY68	6	1.19	2	0.40	5	1.00	15	43	502,467	3,297,251
CY69	5	1.16	3	0.69	4	0.93	4	23	431,849	3,729,100
CY70	1	0.27	1	0.27	0	0.00	0	0	376,930	4,106,030
CY71	2	0.54	1	0.27	2	0.54	7	29	372,410	4,478,440
CY72	4	0.91	3	0.68	1	0.23	3	5	438,029	4,916,469
CY73	4	1.21	1	0.30	1	0.30	2	3	329,410	5,245,879
CY74	2	0.67	2	0.67	1	0.34	1	2	296,320	5,542,199
CY75	1	0.38	3	1.13	1	0.38	2	4	266,522	5,808,721
CY76	2	0.77	0	0.00	2	0.77	11	22	259,785	6,068,506
CY77	2	0.76	33	12.58	2	0.76	2	20	262,304	6,330,810
CY78	0	0.00	34	12.51	0	0.00	0	0	271,819	6,602,629
CY79	3	1.11	6	2.23	1	0.37	3	5	269,432	6,872,061
CY80	1	0.39	2	0.78	0	0.00	0	0	256,761	7,128,822
CY81	3	1.16	2	0.77	2	0.77	3	27	259,602	7,388,424
CY82	2	0.77	0	0.00	2	0.77	6	33	260,007	7,648,431
CY83	0	0.00	0	0.00	0	0.00	0	0	258,777	7,907,208
CY84	0	0.00	3	1.15	0	0.00	0	0	261,112	8,168,320
CY85	2	0.77	0	0.00	2	0.77	5	10	260,908	8,429,228
CY86	1	0.39	0	0.00	1	0.39	2	4	256,743	8,685,971
FY87	2	1.02	0	0.00	2	1.02	3	7	196,423	8,882,394
FY88	0	0.00	1	0.39	0	0.00	0	0	254,973	9,137,367
FY89	3	1.14	1	0.38	2	0.76	4	26	263,910	9,401,277
FY90	1	0.37	0	0.00	1	0.37	2	4	270,624	9,671,901
FY91	1	0.34	0	0.00	0	0.00	0	0	298,070	9,969,971
FY92	1	0.39	0	0.00	1	0.39	0	0	255,073	10,225,044
FY93	0	0.00	1	0.41	0	0.00	0	0	245,691	10,470,735
FY94	0	0.00	0	0.00	0	0.00	0	0	219,188	10,689,923
FY95	0	0.00	2	0.91	0	0.00	0	0	219,866	10,909,789
FY96	0	0.00	0	0.00	0	0.00	0	0	215,087	11,124,876
FY97	0	0.00	4	1.89	0	0.00	0	0	212,055	11,336,931
FY98	1	0.47	0	0.00	0	0.00	0	0	211,206	11,548,137
FY99	1	0.48	1	0.48	1	0.48	2	4	207,796	11,755,933
FY00	0	0.00	1	0.56	0	0.00	0	0	177,394	11,933,327
FY01	0	0.00	5	2.71	0	0.00	0	0	184,227	12,117,554
FY02	0	0.00	5	2.08	0	0.00	0	0	239,967	12,357,521
FY03	1	0.41	6	2.46	0	0.00	0	0	244,305	12,601,826
FY04	1	0.40	8	3.22	0	0.00	0	0	248,773	12,850,599

FY05	0	0.00	11	4.51	0	0.00	0	0	244,103	13,094,702
FY06	0	0.00	16	6.76	0	0.00	0	0	236,749	13,331,451
FY07	1	0.42	17	7.16	0	0.00	0	0	237,557	13,569,008
FY08	1	0.43	12	5.12	0	0.00	0	0	234,563	13,803,571
FY09	0	0.00	14	6.16	0	0.00	0	0	227,201	14,030,772
FY10	0	0.00	5	2.14	0	0.00	0	0	233,705	14,264,477
FY11	0	0.00	6	2.25	0	0.00	0	0	266,860	14,531,337
FY12	0	0.00	2	0.90	0	0.00	0	0	221,707	14,753,044
FY13	1	0.53	5	2.67	1	0.53	2	3	187,130	14,940,174
FY14	0	0.00	3	1.56	0	0.00	0	0	192,380	15,132,554
FY15	2	0.84	5	2.11	0	0.00	0	0	237,132	15,369,686
FY16	0	0.00	6	2.81	0	0.00	0	0	213,705	15,583,391
FY17	0	0.00	7	3.48	0	0.00	0	0	200,887	15,784,278
FY18	1	0.56	2	1.12	0	0.00	0	0	177,955	15,962,233
FY19	0	0.00	3	1.88	0	0.00	0	0	159,543	16,121,776
Total	87.00		261.00		65.00		136.00	632.00		16,121,776
	Average Annual Class A Mishaps	Average Class A Rate	Average Annual Class B Mishaps	Average Class B Rate	Average Annual Destroyed	Average Destroyed Rate	Average Pilot Fatal Rate	Average Fatal Rate	Average Annual Hours	
5 YR	0.60	0.30	4.60	2.33	0.00	0.00	0.00	0.00	197,844	
10 YR	0.40	0.19	4.40	2.10	0.10	0.05	0.10	0.14	209,100	
LIFETIME	1.38	0.54	4.14	1.62	1.03	0.40	0.84	3.92	255,901	

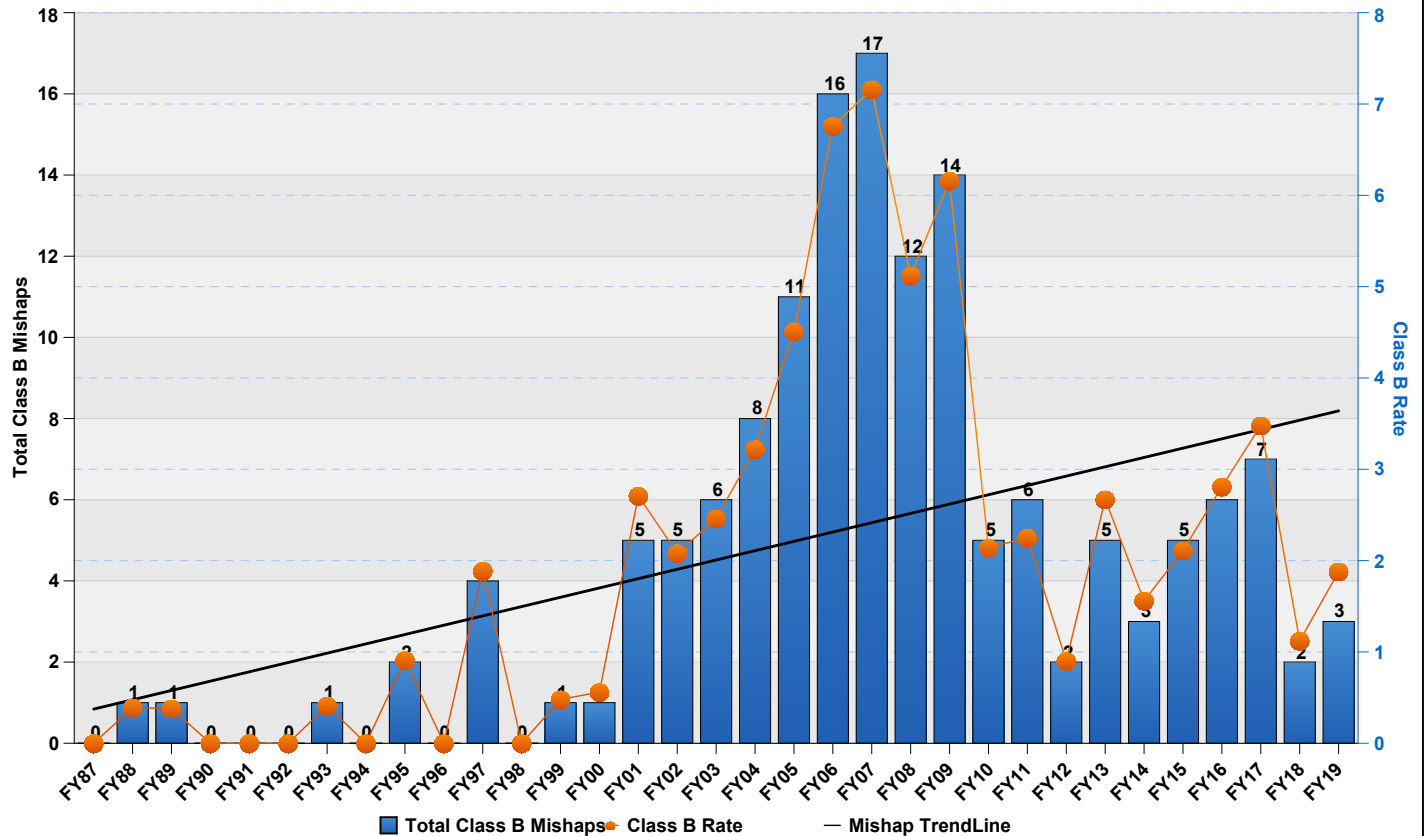
<p>Flight "rates" are number of mishaps per 100,000 flight hours. Only Aviation "Flight" mishaps are reported here. An Aviation "Flight" mishap is any mishap in which there is intent for flight and reportable damage to a DoD aircraft. Explosives and chemical agents or guided missile mishaps that cause damage in excess of \$20,000 to a DoD aircraft with intent for flight are categorized as aircraft flight mishaps to avoid dual reporting. This is the only aviation mishap subcategory that contributes to the flight mishap rate (NOT flight-related or Aviation Ground Ops). Fiscal Years that have zero flying hours have been excluded.</p>	<p>Class A Mishap. A mishap resulting in one or more of the following: 1. Direct mishap cost totaling \$2,000,000 or more (\$1,000,000 for mishaps occurring before FY10). 2. A fatality or permanent total disability. 3. Destruction of a DoD aircraft. NOTE: A destroyed UAV/RPA is not a Class A mishap unless the preceding criteria in "1" or "2" are met. Class B Mishap. A mishap resulting in one or more of the following: 1. Direct mishap cost totaling \$500,000 or more but less than \$2,000,000 (\$200,000 to \$1,000,000 prior to FY10). 2. A permanent partial disability. 3. Inpatient hospitalization of three or more personnel. Does not count or include individuals hospitalized for observation, diagnostic, or administrative purposes that were treated and released.</p>	<p>Destroyed Aircraft: Only aircraft owned, designated or leased as "USAF" are included. Fatalities: Pilot totals only include "USAF" personnel designated as "pilot" by the Safety Investigation Board. "All" fatalities include all aviation-related fatalities regardless of designation (USAF, foreign, civilian, etc) or role (pilot, operator, passenger, etc). Additionally, all aviation-related fatalities count toward fatality rate regardless if they resulted from a "flight" (rate-producing) mishap or not.</p>
--	--	--

UPDATED 31-Oct-19

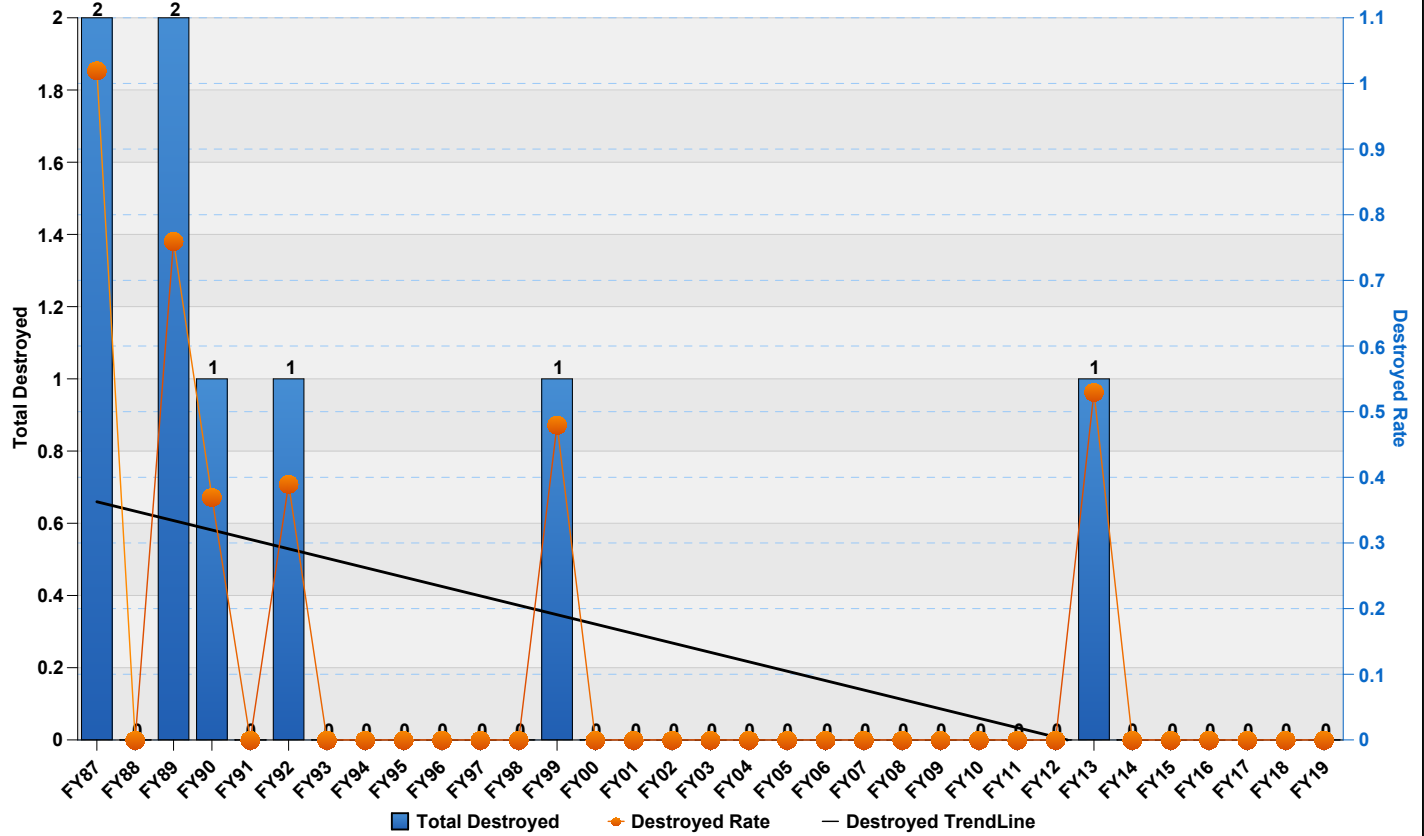
C-135 Class A Mishaps by Fiscal Year



C-135 Class B Mishaps by Fiscal Year



C-135 Destroyed Aircraft by Fiscal Year



C-135 Fatalities (All) by Fiscal Year

