

T-37 FLIGHT MISHAP HISTORY
(All Rates per 100,000 Flying Hours)

YEAR	CLASS A		CLASS B		DESTROYED		FATAL		HOURS	CUM HRS
	Total Class A Mishaps	Class A Rate	Total Class B Mishaps	Class B Rate	Total Destroyed	Destroyed Rate	PILOT	ALL		
CY56	1	149.25	0	0.00	0	0.00	0	0	670	670
CY57	1	14.90	0	0.00	1	14.90	0	0	6,713	7,383
CY58	5	8.79	2	3.51	3	5.27	0	3	56,908	64,291
CY59	14	9.23	2	1.32	14	9.23	0	4	151,713	216,004
CY60	8	3.17	2	0.79	7	2.77	0	5	252,361	468,365
CY61	9	4.08	3	1.36	7	3.18	1	2	220,362	688,727
CY62	14	4.70	2	0.67	15	5.04	3	7	297,765	986,492
CY63	5	1.53	3	0.92	5	1.53	3	6	326,348	1,312,840
CY64	8	2.11	4	1.06	7	1.85	1	5	378,410	1,691,250
CY65	7	1.99	1	0.28	8	2.27	3	7	351,848	2,043,098
CY66	2	0.53	0	0.00	3	0.80	1	1	376,716	2,419,814
CY67	4	0.99	0	0.00	4	0.99	2	4	405,880	2,825,694
CY68	4	0.92	0	0.00	4	0.92	0	1	433,597	3,259,291
CY69	9	1.79	1	0.20	10	1.99	5	11	502,492	3,761,783
CY70	5	0.99	0	0.00	5	0.99	1	4	503,447	4,265,230
CY71	2	0.43	1	0.22	3	0.65	0	0	463,844	4,729,074
CY72	4	0.91	1	0.23	5	1.14	1	2	439,929	5,169,003
CY73	3	0.71	1	0.24	2	0.47	1	2	422,721	5,591,724
CY74	1	0.33	1	0.33	1	0.33	0	1	305,106	5,896,830
CY75	1	0.33	1	0.33	1	0.33	1	1	301,353	6,198,183
CY76	2	0.70	4	1.41	2	0.70	0	0	284,548	6,482,731
CY77	1	0.38	0	0.00	1	0.38	0	0	263,718	6,746,449
CY78	3	1.16	2	0.78	3	1.16	0	0	257,599	7,004,048
CY79	1	0.34	0	0.00	1	0.34	0	0	295,890	7,299,938
CY80	4	1.42	0	0.00	4	1.42	0	3	282,066	7,582,004
CY81	2	0.68	0	0.00	2	0.68	0	1	295,614	7,877,618
CY82	2	0.63	0	0.00	1	0.31	1	2	318,348	8,195,966
CY83	1	0.30	0	0.00	1	0.30	0	1	328,836	8,524,802
CY84	1	0.31	0	0.00	1	0.31	0	0	320,175	8,844,977
CY85	1	0.32	0	0.00	1	0.32	0	0	312,805	9,157,782
CY86	1	0.32	0	0.00	1	0.32	0	0	312,587	9,470,369
FY87	0	0.00	0	0.00	0	0.00	0	0	240,762	9,711,131
FY88	1	0.31	0	0.00	1	0.31	0	0	318,268	10,029,399
FY89	1	0.32	0	0.00	1	0.32	0	0	314,105	10,343,504
FY90	0	0.00	0	0.00	0	0.00	0	0	306,885	10,650,389
FY91	0	0.00	0	0.00	0	0.00	0	0	279,593	10,929,982
FY92	2	0.85	0	0.00	3	1.28	2	2	234,830	11,164,812
FY93	1	0.56	0	0.00	1	0.56	0	0	179,933	11,344,745
FY94	0	0.00	0	0.00	0	0.00	0	0	151,651	11,496,396
FY95	1	0.74	0	0.00	1	0.74	0	0	134,425	11,630,821
FY96	0	0.00	0	0.00	0	0.00	0	0	144,079	11,774,900
FY97	1	0.63	0	0.00	1	0.63	0	0	159,855	11,934,755
FY98	0	0.00	0	0.00	0	0.00	0	0	183,911	12,118,666
FY99	0	0.00	0	0.00	0	0.00	0	0	201,993	12,320,659
FY00	1	0.49	0	0.00	1	0.49	0	1	202,950	12,523,609
FY01	1	0.50	0	0.00	1	0.50	0	0	199,417	12,723,026
FY02	1	0.52	0	0.00	1	0.52	2	2	192,933	12,915,959
FY03	1	0.57	0	0.00	1	0.57	0	0	174,966	13,090,925

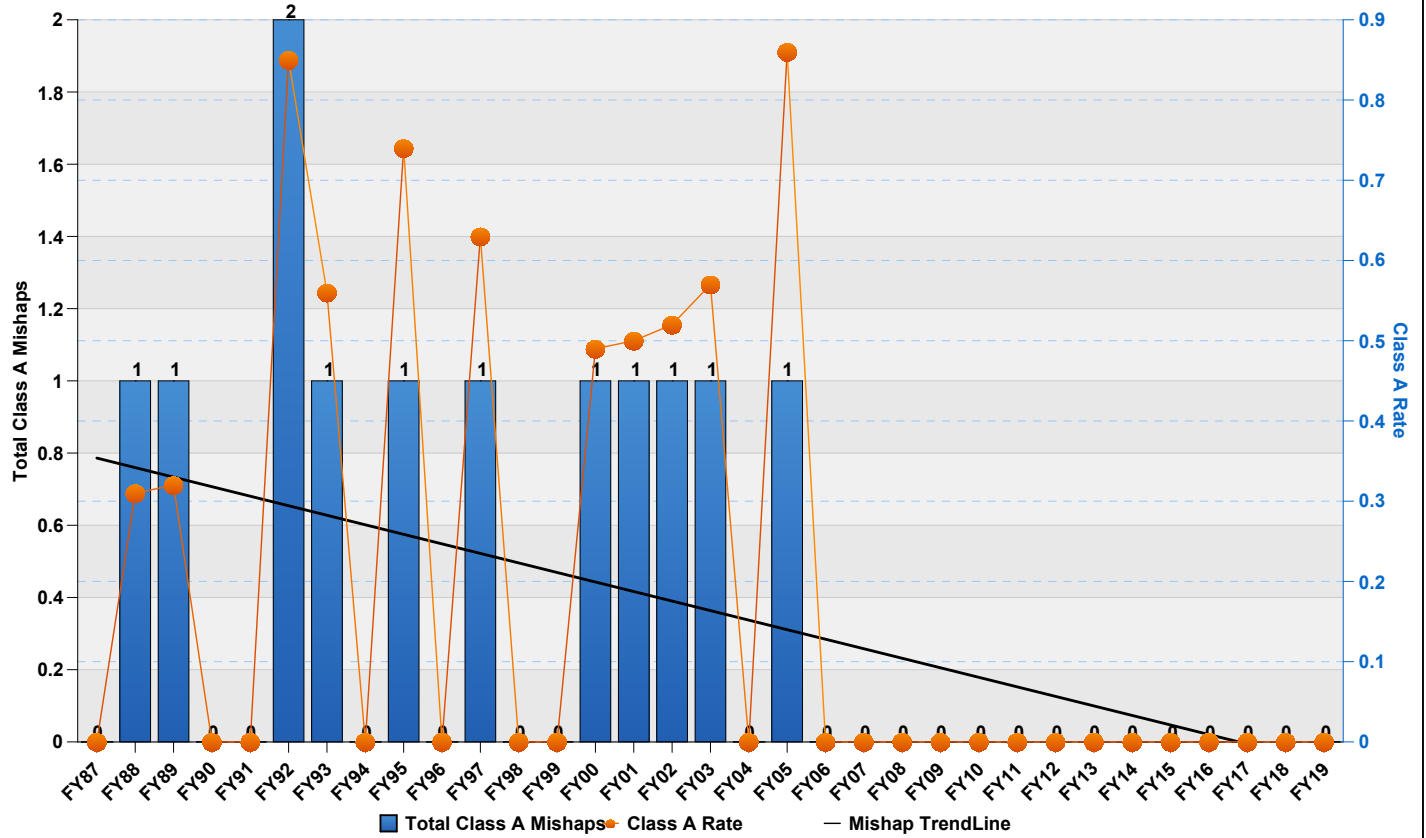
FY04	0	0.00	0	0.00	0	0.00	0	0	151,410	13,242,335
FY05	1	0.86	0	0.00	1	0.86	0	1	116,363	13,358,698
FY06	0	0.00	0	0.00	0	0.00	0	0	93,572	13,452,270
FY07	0	0.00	0	0.00	0	0.00	0	0	65,933	13,518,203
FY08	0	0.00	0	0.00	0	0.00	0	0	38,694	13,556,897
FY09	0	0.00	0	0.00	0	0.00	0	0	9,461	13,566,358
FY10	0	0.00	0	0.00	0	0.00	0	0	0	13,566,358
FY11	0	0.00	0	0.00	0	0.00	0	0	0	13,566,358
FY12	0	0.00	0	0.00	0	0.00	0	0	0	13,566,358
FY13	0	0.00	0	0.00	0	0.00	0	0	0	13,566,358
FY14	0	0.00	0	0.00	0	0.00	0	0	0	13,566,358
FY15	0	0.00	0	0.00	0	0.00	0	0	0	13,566,358
FY16	0	0.00	0	0.00	0	0.00	0	0	0	13,566,358
FY17	0	0.00	0	0.00	0	0.00	0	0	0	13,566,358
FY18	0	0.00	0	0.00	0	0.00	0	0	0	13,566,358
FY19	0	0.00	0	0.00	0	0.00	0	0	0	13,566,358
Total	138.00		31.00		136.00		28.00	79.00		13,566,358

	Average Annual Class A Mishaps	Average Class A Rate	Average Annual Class B Mishaps	Average Class B Rate	Average Annual Destroyed	Average Destroyed Rate	Average Pilot Fatal Rate	Average Fatal Rate	Average Annual Hours	
5 YR	0.00		0.00		0.00				0	
10 YR	0.00		0.00		0.00				0	
LIFETIME	2.16	1.02	0.48	0.23	2.12	1.00	0.21	0.58	211,974	

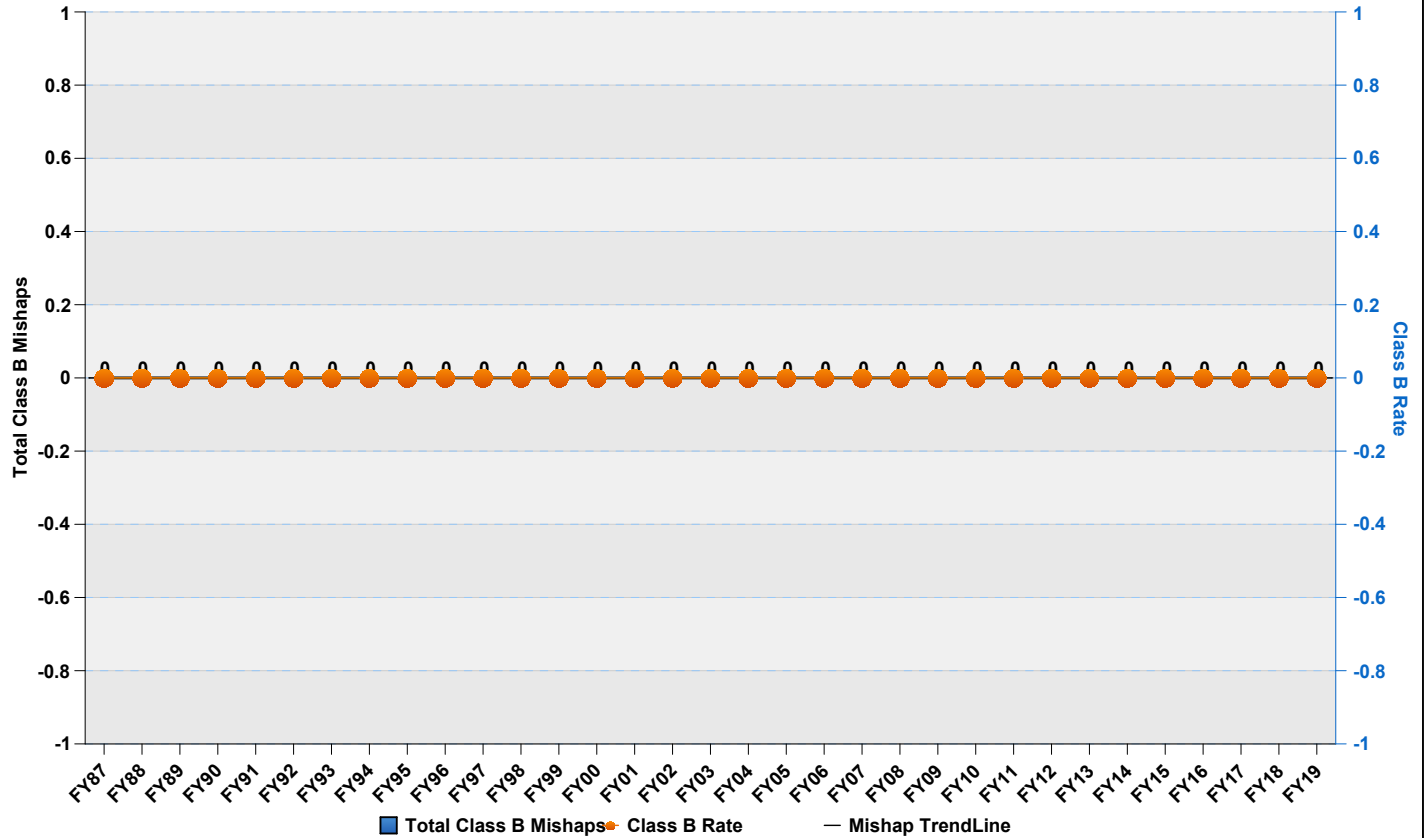
<p>Flight "rates" are number of mishaps per 100,000 flight hours. Only Aviation "Flight" mishaps are reported here. An Aviation "Flight" mishap is any mishap in which there is intent for flight and reportable damage to a DoD aircraft. Explosives and chemical agents or guided missile mishaps that cause damage in excess of \$20,000 to a DoD aircraft with intent for flight are categorized as aircraft flight mishaps to avoid dual reporting. This is the only aviation mishap subcategory that contributes to the flight mishap rate (NOT flight-related or Aviation Ground Ops). Fiscal Years that have zero flying hours have been excluded.</p>	<p>Class A Mishap. A mishap resulting in one or more of the following: 1. Direct mishap cost totaling \$2,000,000 or more (\$1,000,000 for mishaps occurring before FY10). 2. A fatality or permanent total disability. 3. Destruction of a DoD aircraft. NOTE: A destroyed UAV/RPA is not a Class A mishap unless the preceding criteria in "1" or "2" are met. Class B Mishap. A mishap resulting in one or more of the following: 1. Direct mishap cost totaling \$500,000 or more but less than \$2,000,000 (\$200,000 to \$1,000,000 prior to FY10). 2. A permanent partial disability. 3. Inpatient hospitalization of three or more personnel. Does not count or include individuals hospitalized for observation, diagnostic, or administrative purposes that were treated and released.</p>	<p>Destroyed Aircraft: Only aircraft owned, designated or leased as "USAF" are included. Fatalities: Pilot totals only include "USAF" personnel designated as "pilot" by the Safety Investigation Board. "All" fatalities include all aviation-related fatalities regardless of designation (USAF, foreign, civilian, etc) or role (pilot, operator, passenger, etc). Additionally, all aviation-related fatalities count toward fatality rate regardless if they resulted from a "flight" (rate-producing) mishap or not.</p>
--	--	--

UPDATED 01-Nov-19

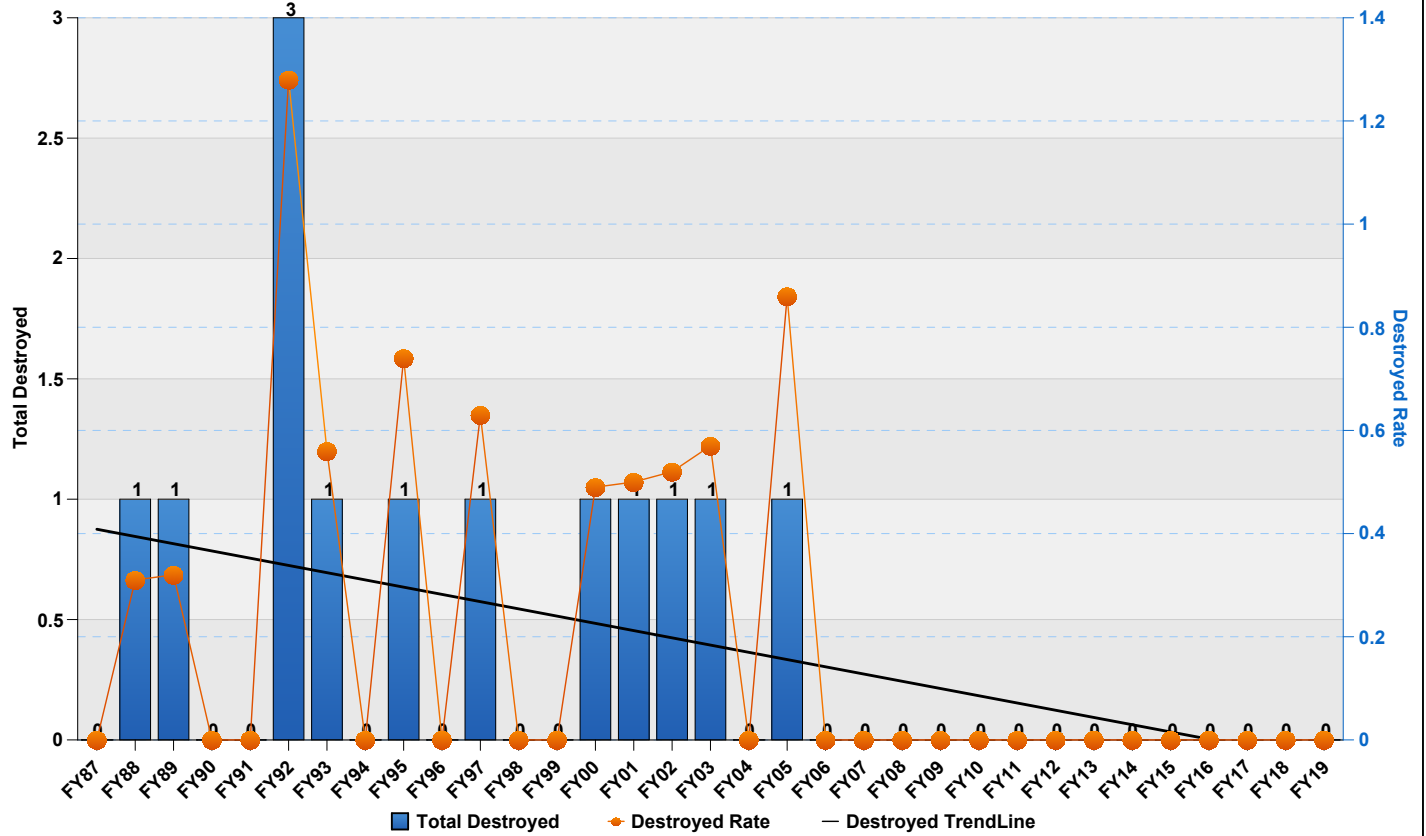
T-37 Class A Mishaps by Fiscal Year



T-37 Class B Mishaps by Fiscal Year



T-37 Destroyed Aircraft by Fiscal Year



T-37 Fatalities (All) by Fiscal Year

